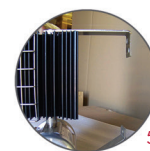
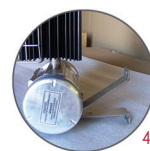
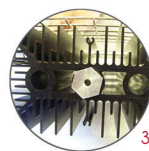
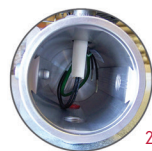
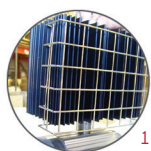
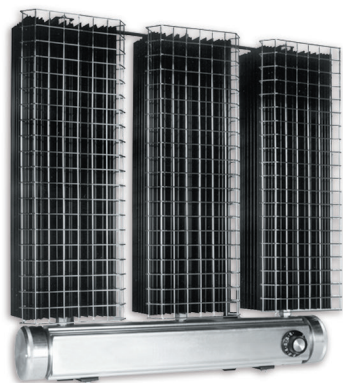


# XB Explosion-Proof Convection Heater



## Features

### Voltage

- 120V, 208V, 240V, 480V, 600V, 1-phase.

### Construction

- Unique design.
- Efficient aluminum convector.
- Standard protective grille. **1**
- Low temperature convection.
- Sealed junction box. **2**

### Heating element

- Tubular heating element inserted in an aluminum heat sink. **3**

### Watt density

- Varies according to temperature code.

### Control

- Built-in thermostat available.

### Installation

- Built-in wall support. **4, 5**

### Warranty

- 1-year warranty against defects.

### Application

- Refinery, chemical storage, mining industry.

*Maximum room temperature: 25 °C (77 °F).*

*Consult the Electrical Code in your area before installing this unit.*

Models

Watts	Volts	Product #	Temperature Code <sup>2</sup>	Type	L		M		Weight	
					in.	mm	in.	mm	lb	kg
Class I, Division 1, Groups A, B, C and D										
475	120	XB1-1047T2D11	T2D	1	10	254	7 5/16	184	10.0	4.5
1000	120	XB1-4100T2D11	T2D	1	23 7/16	594	7 5/16	184	20.0	9.1
1500	120	XB2-3150T2D11	T2D	2	16 3/4	424	16 1/8	410	30.0	13.6
1000	208	XB1-4100T2D21	T2D	1	23 7/16	594	7 5/16	184	20.0	9.1
1500	208 <sup>1</sup>	XB2-3150T2D21	T2D	2	16 3/4	424	16 1/8	410	30.0	13.6
2000	208 <sup>1</sup>	XB2-4200T2D21	T2D	2	23 7/16	594	16 1/8	410	40.0	18.1
3000	208 <sup>1</sup>	XB3-4300T2D21	T2D	3	23 7/16	594	25	635	60.0	27.2
4500	208 <sup>1</sup>	XB4-6450T2D21	T2D	4	30 1/8	765	33 15/16	860	100.0	45.4
1000	240	XB1-4100T2D31	T2D	1	23 7/16	594	7 5/16	184	20.0	9.1
1500	240 <sup>1</sup>	XB2-3150T2D31	T2D	2	16 3/4	424	16 1/8	410	30.0	13.6
2000	240 <sup>1</sup>	XB2-4200T2D31	T2D	2	23 7/16	594	16 1/8	410	40.0	18.1
3000	240 <sup>1</sup>	XB3-4300T2D31	T2D	3	23 7/16	594	25	635	60.0	27.2
4500	240 <sup>1</sup>	XB4-6450T2D31	T2D	4	30 1/8	765	33 15/16	860	100.0	45.4
1000	480	XB1-4100T2D71	T2D	1	17 3/4	451	7 5/16	184	20.0	9.1
2000	480 <sup>1</sup>	XB2-4200T2D71	T2D	2	17 3/4	451	16 1/8	410	40.0	18.1
3000	480 <sup>1</sup>	XB3-4300T2D71	T2D	3	17 3/4	451	25	635	60.0	27.2
4500	480 <sup>1</sup>	XB4-6450T2D71	T2D	4	30 1/8	765	33 15/16	860	100.0	45.4
Class I, Divisions 1 and 2, Groups A, B, C and D										
Class II, Divisions 1 and 2, Groups E, F and G - Class III, Division 1										
2250	120	XB3-6225T3B11	T3B	3	30 1/8	765	25	635	75.0	34.0
2250	208 <sup>1</sup>	XB3-6225T3B21	T3B	3	30 1/8	765	25	635	75.0	34.0
2250	240 <sup>1</sup>	XB3-6225T3B31	T3B	3	30 1/8	765	25	635	75.0	34.0
2250	480 <sup>1</sup>	XB3-6225T3B71	T3B	3	30 1/8	765	25	635	75.0	34.0

Options

Product # Kit	Product # Factory installed*	Description
-	T	Single-pole thermostat for single phase units only
-	T2	Double-pole thermostat
XB-TM	-	Explosion-proof wall thermostat, range -18 °C to 40 °C (0 °F to 100 °F): 15A at 600V, 25A at 277V
XB-TM2	-	Double-pole explosion-proof wall thermostat, range -18 °C to 40 °C (0 °F to 100 °F): 15A at 600V, 25A at 277

\* For factory installed options, add the option number to the product number. See the **Product Code** section inside the front cover.

<sup>1</sup> 3-phase models available upon request. If built-in thermostat is required, use the T2 or the XB-TM2 with 3-phase units.

<sup>2</sup> Temperature code: T2D = 215 °C (419 °F), T3B = 165 °C (329 °F).

For any other ratings and risk areas, contact our customer service.

