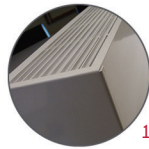


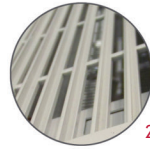
OHB High Density Aluminum Draft Barrier



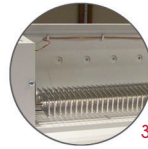
With pedestals



1



2



3



4



5

Features

Color

- Standard: white, almond.
- Optional (upcharge applicable): metallic silver, bronze, metallic charcoal, aluminum, semi-gloss black, sand.
- Custom colors available upon request.

Finish

- Standard: epoxy/polyester powder paint.
- Optional: anodized aluminum.

Voltage

- 208V, 240/208V, 277V, 347V, 480V, 600V, 50/60 Hz, 1-phase.

Construction

- 14-gauge (0.0787 in. [2 mm]) aluminum front cover. **1**
- 18-gauge satin coat steel cabinet.
- Screw assembly for added strength.
- Full length built-in wireway.
- Separate low voltage wireway (-WW) available.
- Pencil-proof openings less than 1/4 in. (6.4 mm). **2**
- Bottom fresh air inlet, top warm air outlet.
- Clean back available (-BD).
- Linear high-limit temperature control with automatic reset. **3**
- High altitude version available (-HA).
- End caps included.

Heating element

- Two stainless steel tubular heating elements with aluminum fins.
- Floating heating elements on high-temperature nylon bushings reducing expansion noises. **4**

Watt density

- Standard watt density.
- Low watt density.
- High watt density.

Control

- Built-in thermostat available with a control knob or tamperproof.
- Mechanical, electronic or pneumatic relays available.

Ouellet highly recommends to use an electronic wall thermostat for greater comfort.

Installation

- Not for residential use in the United States.
- Heater must be installed at least 3 in. (76 mm) from finished floor.
- Mounting holes spaced on 2 in. (51 mm) intervals for ease of installation.
- Installation on wall or floor mounted with pedestals. **5**
- Pedestal kit available.
- Variety of accessories available for wall-to-wall installation.

Warranty

- 10-year warranty against defects.

Application

- Commercial building, office building, hospital, daycare center, private residence.

OHB

Standard Watt Density Models

Watts	Watts		Product #			Length		Weight	
	240/208V	208V	240/208V	277V	480V	in.	mm	lb	kg
750	750/563	OHB0758	OHB0750	OHB0777	-	23 5/8	600	10.7	4.8
1000	1000/750	OHB1008	OHB1000	OHB1077	OHB1004	35 7/16	900	14.1	6.4
1400	1400/1050	OHB1408	OHB1400	OHB1477	OHB1404	47 1/4	1200	17.6	8.0
1750	1750/1313	OHB1758	OHB1750	OHB1777	OHB1754	59 1/16	1500	21.1	9.6
2100	2100/1577	OHB2108	OHB2100	OHB2177	OHB2104	70 7/8	1800	24.6	11.1
2450	2450/1840	OHB2458	OHB2450	OHB2477	OHB2454	82 11/16	2100	28.0	12.7
2800	2800/2103	OHB2808	OHB2800	OHB2877	OHB2804	94 1/2	2400	31.5	14.3

Low Watt Density Models

Product # ¹	Length	Weight	Average Density W/ft.	Watts	Watts 240/208V ¹	208V	240/208V	277V	480V
OHB040X-600	23 5/8"	10.7 lb	175	375	375/281	✓	✓	✓	-
OHB050X-600	(600 mm)	(4.8 kg)	250	500	500/375	✓	✓	✓	-
OHB050X-900	35 7/16"	14.1 lb	175	500	500/375	✓	✓	✓	✓
OHB075X-900	(900 mm)	(6.4 kg)	250	750	750/563	✓	✓	✓	✓
OHB070X-1200	47 1/4"	17.6 lb	175	700	700/525	✓	✓	✓	✓
OHB100X-1200	(1200 mm)	(8.0 kg)	250	1000	1000/750	✓	✓	✓	✓
OHB087X-1500	59 1/16"	21.1 lb	175	875	875/656	✓	✓	✓	✓
OHB125X-1500	(1500 mm)	(9.6 kg)	250	1250	1250/938	✓	✓	✓	✓
OHB105X-1800	70 7/8"	24.6 lb	175	1050	1050/788	✓	✓	✓	✓
OHB150X-1800	(1800 mm)	(11.1 kg)	250	1500	1500/1125	✓	✓	✓	✓
OHB122X-2100	82 11/16"	28.0 lb	175	1225	1225/919	✓	✓	✓	✓
OHB175X-2100	(2100 mm)	(12.7 kg)	250	1750	1750/1313	✓	✓	✓	✓
OHB140X-2400	94 1/2"	31.5 lb	175	1400	1400/1050	✓	✓	✓	✓
OHB200X-2400	(2400 mm)	(14.3 kg)	250	2000	2000/1500	✓	✓	✓	✓

High Watt Density Models

Watts	Watts		Product #			Length		Weight	
	240/208V	208V	240/208V	277V	480V	in.	mm	lb	kg
1000	1000/750	OHBH1008	OHBH1000	OHBH1077	OHBH1004	23 5/8	600	10.7	4.8
1500	1500/1125	OHBH1508	OHBH1500	OHBH1577	OHBH1504	35 7/16	900	14.1	6.4
2000	2000/1500	OHBH2008	OHBH2000	OHBH2077	OHBH2004	47 1/4	1200	17.6	8.0
2500	2500/1875	OHBH2508	OHBH2500	OHBH2577	OHBH2504	59 1/16	1500	21.1	9.6
3000	3000/2250	OHBH3008	OHBH3000	OHBH3077	OHBH3004	70 7/8	1800	24.6	11.1
3500	3500/2625	OHBH3508 ²	OHBH3500	OHBH3577	OHBH3504	82 11/16	2100	28.0	12.7
4000	4000/3000	OHBH4008 ²	OHBH4000 ²	OHBH4077	OHBH4004	94 1/2	2400	31.5	14.3

¹ X = 8 (208V), 0 (240/208V), 77 (277V), 4 (480V).

² If the control option "24V electronic relay" is required, these products need two electronic relays.

✓ = Available.

Add "BL" for white, "AM" for almond. Optional colors shown in the color chart section are available upon request.

Other colors, accessories and finishes are available upon request. Please contact your customer service representative.

Other voltages available upon request.

Options

Product # Kit	Product # Factory installed*	Description
-	BD ¹	Clean back
KIT-OHB-CE	-	Outside corner, 8 in. (203 mm)
KIT-OHB-CI	-	Inside corner, 8 in. (203 mm)
KIT-OHB-JT	-	Splice plate, 2 in. (51 mm)
KIT-OHB-JT-PE	-	Contour splice plate for BD option and/or heater with pedestals, 2 in. (51 mm)
KIT-OHB-PEC	-	Square-shaped pedestal kit (2), 3 in. (76 mm)
OHB-SV-XX	-	Empty cabinet with length of XX mm (minimum: 154 mm, maximum: 2400 mm)
KIT-OHB-DIS20 ³	DIS20 ³	Disconnect switch, 20A at 277V max.
KIT-OHB-DIS40 ³	DIS40 ³	Disconnect switch, 40A at 600V max.
-	HA	Linear high-limit temperature control for high altitude (3000 ft. to 8200 ft.)
-	PM	Pneumatic relay, 20A at 600V max.
KIT-OHB-R-347	R	Single-pole relay, coil 24V, without transformer, 22A at 208V, 240V - 19A at 277V - 18A at 347V
KIT-OHB-R-600	R	Single-pole relay, coil 24V, without transformer, 10A at 600V
KIT-OHB-RT-208	RT	Single-pole relay, coil 24V, with transformer 208V/24V, 22A at 208V
KIT-OHB-RT-240	RT	Single-pole relay, coil 24V, with transformer 240V/24V, 22A at 240V
KIT-OHB-RT-277	RT	Single-pole relay, coil 24V, with transformer 277V/24V, 19A at 277V
KIT-OHB-RT-347	RT	Single-pole relay, coil 24V, with transformer 347V/24V, 18A at 347V
KIT-OHB-RT-600 ²	RT ²	Single-pole relay, coil 24V, with transformer 600V/24V, 10A at 600V (2-wire only)
KIT-OHB-T	T	Single-pole thermostat: 25A at 208V, 240V - 10A at 277V, 347V, 480V, 600V
KIT-OHB-T2 ⁴	T2 ⁴	Double-pole thermostat: 30A at 208V, 240V - 15A at 347V, 600V
KIT-OHB-T-AV	TAV	Single-pole tamperproof thermostat: 25A at 208V, 240V - 10A at 277V, 347V, 480V, 600V
KIT-OHB-T2-AV ⁴	T2AV ⁴	Double-pole tamperproof thermostat: 30A at 208V, 240V - 15A at 347V, 600V
KIT-OHB-TRIAC-347	TRIAC	Single-pole electronic relay, coil 24V, without transformer, 15A at 347V max.
KIT-OHB-TRIAC-347T	TRIAC	Single-pole electronic relay, coil 24V, with transformer, 15A at 208V, 240V, 347V
KIT-OHB-TRIAC-600	TRIAC	Single-pole electronic relay, coil 24V, without transformer, 6A at 600V max.
-	WW	24V wireway includes high temperature wiring

* For factory installed options, add the option number to the product number. See the **Product Code** section inside the front cover.

¹ For anodized aluminum heaters, the clean back option will be fixed with visible rivets.

² These 2-wire relays with transformer can't supply a 3-wire low voltage thermostats.

³ For the U.S. only: The nominal current of the unit must not exceed 80% of the capacity of the disconnect.

⁴ "Off" position.

