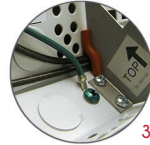
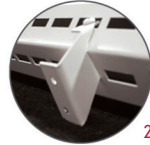
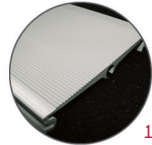


ORC Radiant Cove Heater



Features

Color and Finish

- Standard: white, mat black and anodized aluminum finish.

Voltage

- 120V, 208V, 240V, 277V, 347V, 480V, 600V 50/60 Hz.

Construction

- Front made of an aluminum extrusion profiled to increase radiating surface. **1**
- Back of the unit made with 18-gauge steel.
- Junction box on each end.
- Wall installation brackets (supplied) that doesn't require opening the unit's casing. KOE 7/8 in. (22 mm) for the installation of the BX wires. **2**
- 4 in. (102 mm) ground wires on both ends. **3**
- Wireway approved for interconnection of units using the factory installed additional wires. This is used in wall-to-wall heater installation. **3**
- Highly-emissive paint on the heat exchanger for higher efficiency.

Heating element

- Stainless steel tubular heating element inserted into a solid aluminum extrusion preventing any thermal expansion noise.

Control

- Single or double-pole built-in thermostat available.

Ouellet highly recommends to use an electronic wall thermostat for greater comfort.

Installation

- 6 ft. (1.83 m) minimum clearance to floor and 4 1/2 in. (114 mm) minimum from ceiling.
- Variety of accessories available for wall-to-wall installation.

Warranty

- 10-year warranty against defects.

Application

- Entrance way, bathroom, kitchen, living room, family room, bedroom, patio door, bay window, daycare, nursery, workshop.

Models

Watts	Product #				Weight		Length	
	120V	208V	240V	277V	lb	kg	in.	mm
390	ORC0392	ORC0398	ORC0390	ORC0377	6.0	2.7	34	864
600	ORC0602	ORC0608	ORC0600	ORC0677	8.0	3.6	47	1194
750	ORC0752	ORC0758	ORC0750	ORC0777	10.0	4.5	59	1499
900	ORC0902	ORC0908	ORC0900	ORC0977	12.0	5.4	71	1803
1050	ORC1052	ORC1058	ORC1050	ORC1077	13.0	5.9	83	2108
1200	ORC1202	ORC1208	ORC1200	ORC1277	15.0	6.8	94	2388
1500 ¹	ORC1502	ORC1508	ORC1500	ORC1577	18.0	8.2	113	2870

Options

Product # Kit	Product # Factory installed*	Description
KIT-ORC-JT	-	Splice plate
KIT-ORC-TB6 ²	TB6 ²	Single-pole bi-metal thermostat
KIT-ORC-TB26 ^{2,3}	TB26 ^{2,3}	4 in. (101 mm) section with double-pole bi-metal thermostat

* For factory installed options, add the option number to the product number. See the **Product Code** section inside the front cover.

¹ These models must be ordered in pairs to reduce shipping damages.

² Ouellet highly recommends to use an electronic wall thermostat for greater comfort.

³ "Off" position.

Add "BW" for white, "NM" for mat black and "AA" for anodized aluminum finish.

