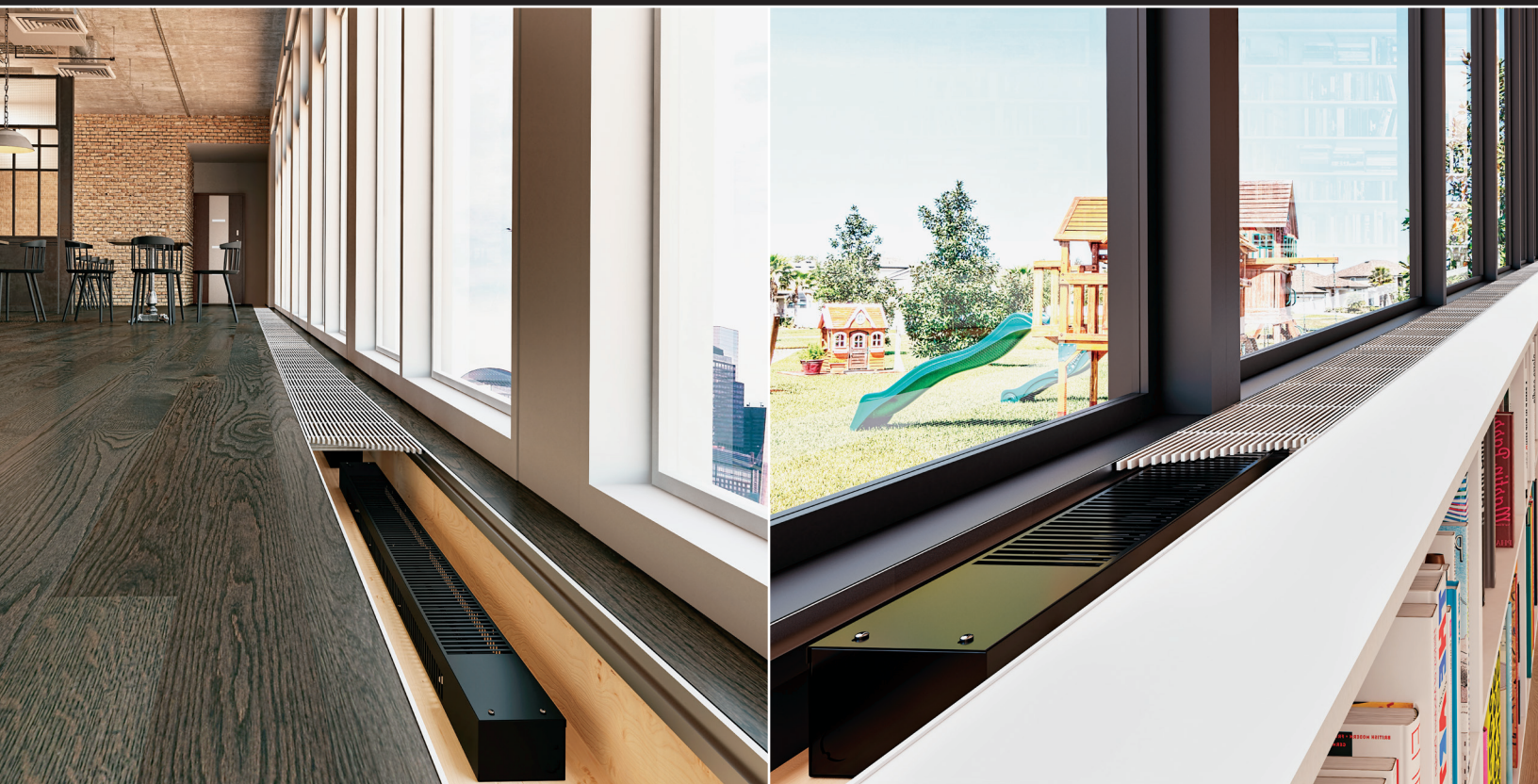


## Trench Insert Floor Convectors OTS Series



## Advantages

- Integrates discreetly into any project.
- Offers installation flexibility as the unit is separate from the trench top grille.
- Spaced or continuous installation configurations.
- Must be installed inside a trench in the floor or in a raised housing with a compatible trench top grille\* (not supplied), which must cover the entire length of the unit.

\* Refer to the table of models of compatible top trench grilles in our catalog.

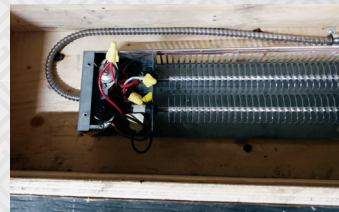
## Important Information

- Densities:
  - Average standard watt density of 250W/ft.
  - Average low watt density of 200W/ft., 167W/ft.
- Voltages: 120V, 208V, 240/208V, 277V, 347V, 480V, 600V, 1-phase.
- Lengths: 36", 48" and 60".
- Safe in the event of water ingress.
- Mechanical or electronic relays available as options (installed on right end only).
- Disconnect switch available as an option.

## Installation



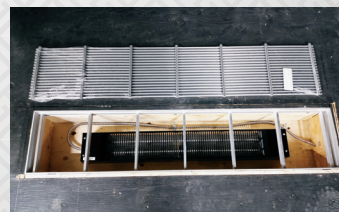
Make sure that the dimensions of the previously fabricated trench meet the minimum dimensions.



Pull through about 8 in. (204 mm) of supply wire.



Place the heater on the bottom surface of the trench and position it respecting the minimum clearance distances from the internal surfaces. Make sure that the model of the top trench grille and the grille frame are compatible (not supplied).



Screw the heater cover.

Install the grille frame and the top trench grille.

The top trench grille must cover the entire length of the heater.



Use the 2 fixing holes in the bottom of the heater to secure it using appropriate screws (not supplied).